

PUBLIC ACCESS TO KENNEDY LIBRARY COMPUTERS

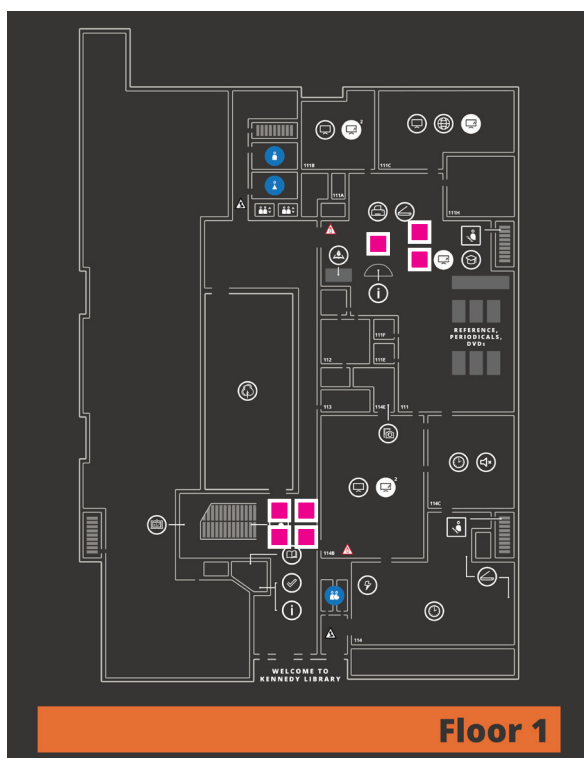


Starting September 2014, our public computer users will have access to 13 library computers located on the 1st, 3rd, 4th and 5th floors, identified by round Yellow PUBLIC sticker in the upper left corner of the monitors.

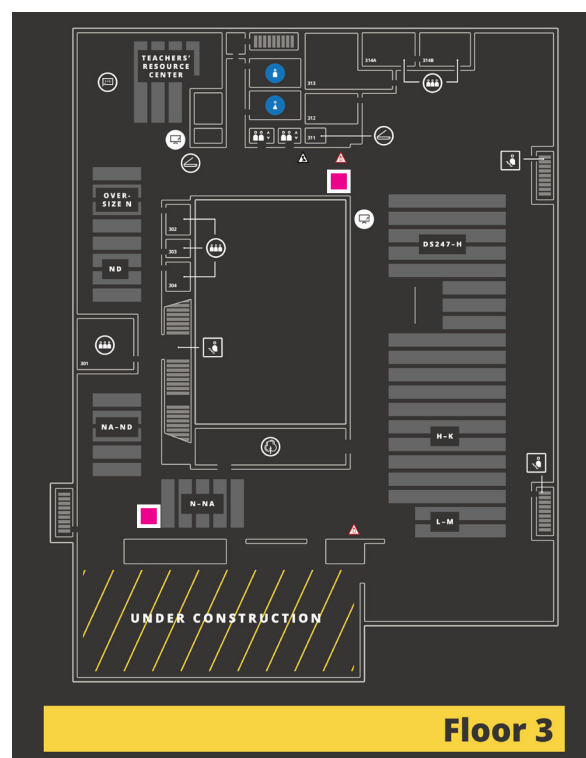
See map for locations: ■

These computers have Internet Explorer, Microsoft Office (Word, Excel, PowerPoint), Adobe PDF Reader, access to the PolyCard printers and the ability to save to a USB drive.

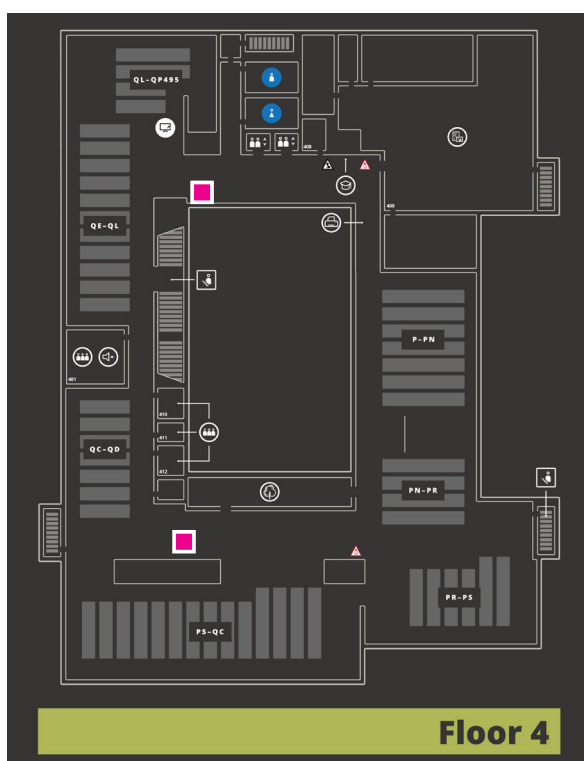
Use may be limited to 2 hours, and all data is erased when the browser (and any Office app windows) are closed, unless saved to USB first or emailed / OneDrive'd /Dropboxed /etc.



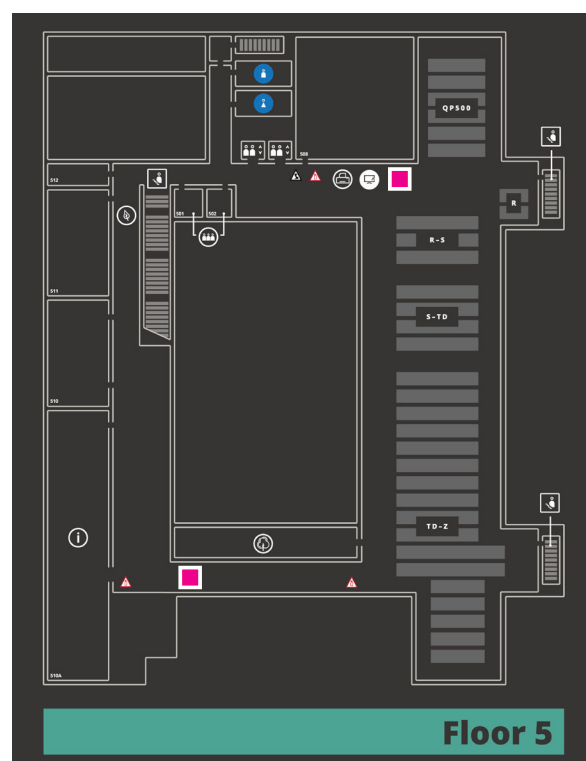
Floor 1



Floor 3



Floor 4



Floor 5

KENNEDY LIBRARY PUBLIC ACCESS TERMINALS

AVAILABLE APPS other than the browser

Word, Excel, Powerpoint and My Computer (to access USB drives) are buttons on the menu bar.

The terminals are functional and you can open and save, and print to Polyprint.

Also, you can report issues to Library IT.



PERFORMANCE

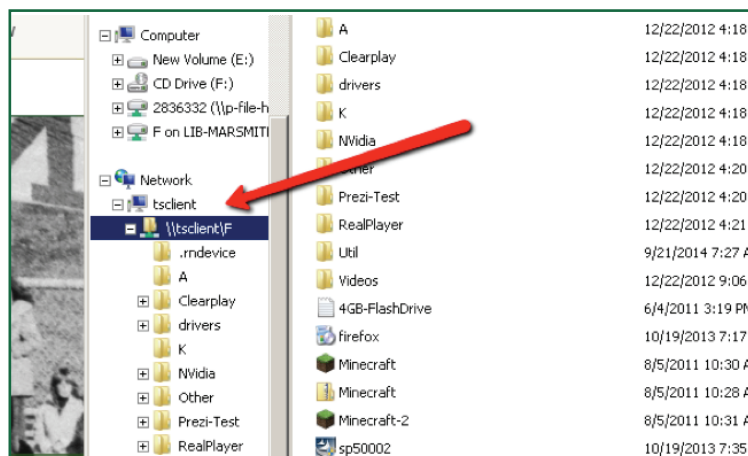
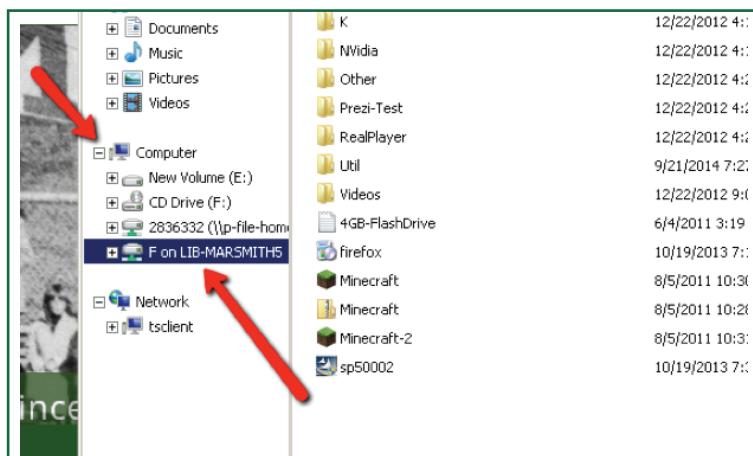
- Performance is expected to improve late Dec when ITS installs added graphics-processing capability on the server backend. How much, we won't know until we can enable RemoteFX on the server and terminals.
- Keep in mind however that these are terminals, not powerful standalone computers.

USB ACCESS and SOUND

- The terminals currently only support (or even see) FAT32-formatted USB drives. User option: On a regular computer, temporarily place data on hard drive (so as not to lose your data), and reformat the USB as FAT32:
- PC: **Back data up to hard drive first.** Then, open "My Computer" → R-click USB drive → Format → Choose FAT32 as File System → check Quick Format → Start. Copy data back to USB.
- Mac: **Back data up to hard drive first.** Then insert USB → Click "Finder | Applications | Utilities | Disk Utility" or search "disk utility." Click the USB root folder in left pane Disk Utility → Click the "Erase" tab right pane → Click "Format" drop-down menu, select MS-DOS (FAT) → Click "Erase" and then "Erase" again.
- The terminal should now see the drives (see below for illustration).

NOTE: RemoteFX mentioned above should also resolve this USB-type issue in Dec '14, supporting EXFAT and other Mac formats, plus NTFS formatted drives.

- To see the drives, it may be necessary to search a bit. In **My Computer** (or from the Browse dialog in Word/Excel/PPT) try expanding the "Computer":



- You may plug in headphones/earbuds on the small round USB wheel (with blue LED) set into the tables by the monitors. Sound is only adjustable in whatever application you are viewing.

NAVIGATION

- The terminal session browsers have been reconfigured to always stay "under" the Office or My Computer windows. This will help keep users from "losing" the active window behind the browser.
- Reminder, when the user closes the browser AND any open Office apps, the machine restarts and all data not saved to USB or emailed to the user is lost!

ANY QUESTIONS?

- Click the "ReportComputerProblems" link in the browser, upper left. This is reported directly to Library IT.
- Ask at the Polyconnect Desk, 1st floor.